

RAC Member Priorities Tracker

Public Transport

In March 2022, 381 of our members¹ took part in a survey telling us about their usage and experiences of public transport, as well as things that would encourage them to catch it more frequently.

How often we use public transport²

Members from Perth typically take public transport:

5% Five or more days a week

4% A few days a week

4% Once a week

6% Once a fortnight

8% Once a month

33% Less often

40% Never

2% of regional members take public transport at least once a week. 70% never take it.

Why we don't use it more

38% say they 'need their car'

Compared to 34% in 2021

35% said it doesn't go where they need it to, or isn't frequent enough

This increased from 26% in 2020 and 24% in 2021.

Other common answers included "time" (23%, up from 7% in 2021), "proximity" (19%, up from 5% in 2021), and "not enjoyable" (18%, up from 5% in 2021).

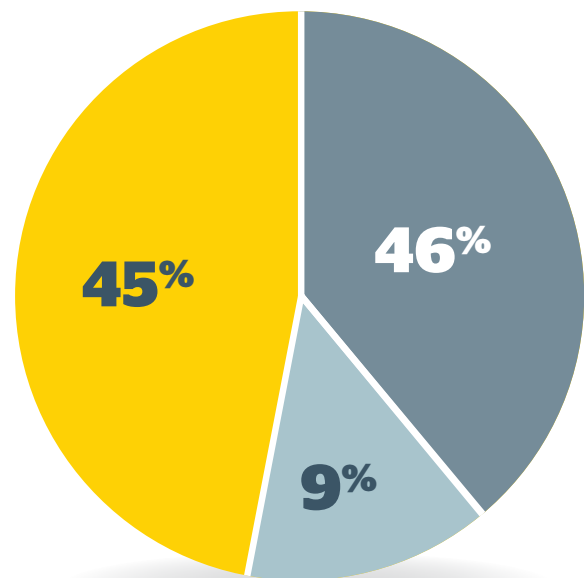
How much we spend a week on fares

84% spend on average less than \$20

Of those who use public transport once a week or more, this drops to 41%, while 18% spend \$50 or more.

Are we using it more or less than we did?

Change in public transport usage in the last 12 months



- About the same
- I use public transport less
- I use public transport more

Reduced need to travel, health concerns, new job/change in employment location, and changes in personal situation are the most common reasons for a change in usage.

¹ 381 responses in March 2022, with 298 residing in the Perth Metropolitan area (including Peel) and 83 in regional WA. Age, gender and location sampling quotas were applied, and data has been post-weighted to be representative of RAC's membership (which is broadly consistent with the WA population profile) - the margin of error at total sample level is +/- 5.0% at the 95% confidence level.

² Based on the respondents to the March 2022 RAC Member Priorities Tracker survey only. This information is asked monthly and may change over time.



For the better

What we think about public transport

Regular public transport users³

75% agree public transport is convenient

21% are worried about health impacts
vs. 24% in 2021

67% feel safe at station/stops
vs. 53% in 2021 and 75% in 2020

70% feel safe onboard
vs. 69% in 2021 and 81% in 2020

70% agree public transport is affordable
53% in 2021 and 52% in 2020

59% agree buses are easy to use/understand
66% in 2021 and 82% in 2020

66% agree buses are reliable
vs. 49% in 2021 and 75% in 2020

94% agree trains are easy to use/understand
vs. 83% in 2021 and 95% in 2020

86% agree trains are reliable
vs. 81% in 2021 and 92% in 2020

Infrequent public transport users⁵

18% agree public transport is convenient
vs 20% in 2021

23% are worried about health impacts
vs. 20% in 2021

41% feel safe at station/stops
vs. 52% in 2021 and 40% in 2020

51% feel safe onboard
vs. 53% in 2021 and 51% in 2020

54% agree public transport is affordable
52% in 2021 and 50% in 2020

53% agree buses are easy to use/understand
55% in 2021 and 52% in 2020

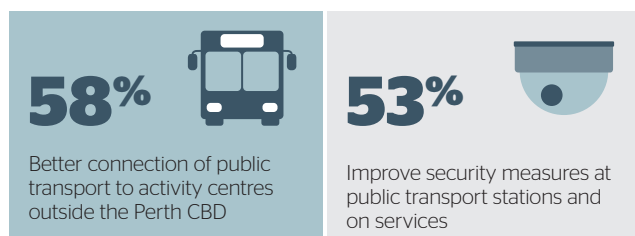
52% agree buses are reliable
vs. 52% in 2021 and 50% in 2020

74% agree trains are easy to use/understand
vs. 72% in 2021 and 73% in 2020

73% agree trains are reliable
vs. 70% in 2021 and 75% in 2020

What would make us use it more?

The top two changes to encourage greater use



What we think about public transport

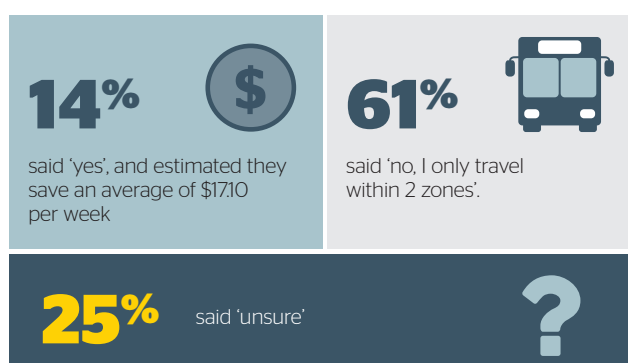
The most preferred changes⁴ to public transport vary for different users. **Making public transport free** was the most preferred change across all members surveyed, while regional members' top priority is **better services between regional towns**. This was also the preferred change of regular cyclists, and over 65-year-olds.

Two-zone cap⁶

63% of members were aware of the changes

Of these, 9% responded that they use public transport more as a result of the cap.

Members⁷ were asked if the introduction of the cap helped to reduce their weekly spend on public transport.



³ Those who use public transport once a week or more – 56 respondents – those who said 'agree' and 'strongly agree'.

⁴ After asking which changes would make them likely to use public transport more often, members were asked which was their most preferred change.

⁵ Those who use public transport less than once a week – 305 respondents – those who said 'agree' and 'strongly agree'.

⁶ Members were asked about the impact of changes to public transport fares commencing January 2022, whereby all travel is capped at a two-zone fare (\$4.90 for a one-way cash ticket or \$3.92 for SmartRider users with Autoload enabled)

⁷ Due to the question being about weekly spend on public transport, only members that take it at least once a week are included in these results.



For further information please contact advocacy@rac.com.au