

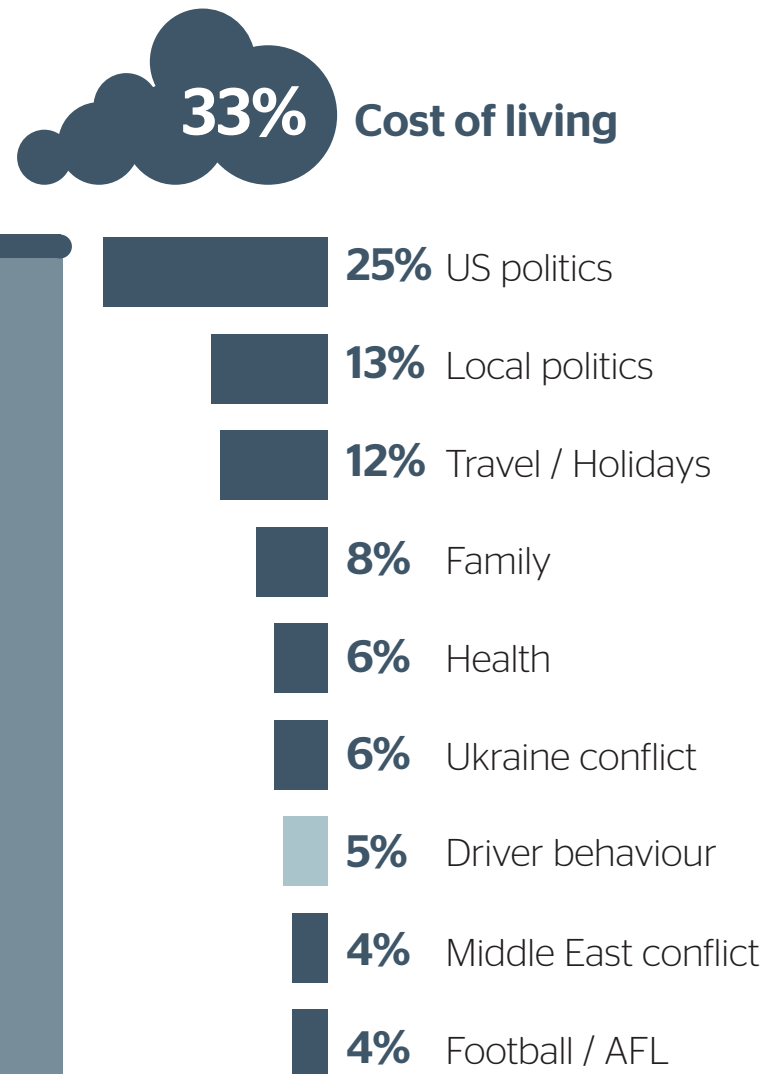
Over 8,000 members shared their views in the RAC Opinion survey in March

Household conversations

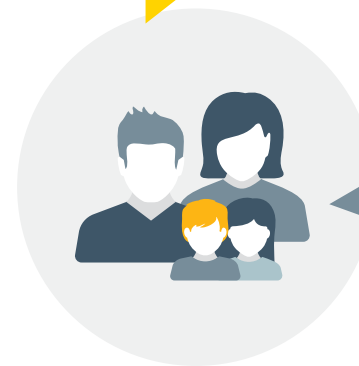
What are members talking about at home?

Topical issues

What do members think about these issues?



"The bad driving by distracted and uncaring drivers, have seen so many near misses."

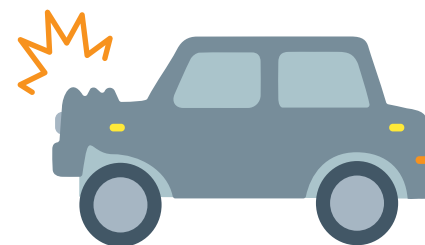


"Bad inconsiderate drivers...rude and aggressive."

More discussion this month about:

Driver behaviour

There's been an increase in discussion this month about driver behaviour, with members concerned about road rage and aggressive driving.



Young drivers

Members would like to see more support for young drivers in the form of:

- » Enhanced driver education (e.g. school programs, driving courses)
- » Road safety campaigns
- » Technology to aid the learning process (e.g. apps or telematics for real-time learning)



Only 50% of P-platers felt very/extremely prepared for their driving test.

Parents believe that the most important support that can be provided to learner drivers is:

- » Practice opportunities
- » Building knowledge of road safety and road rules



Fuel expenditure

On average, members reported spending **\$58 per week** on fuel for their main vehicle.

Easter

1 in every 4 members have travel plans for the Easter period, with the most popular destinations being in the south-west of WA:

- » Albany
- » Busselton
- » Margaret River

