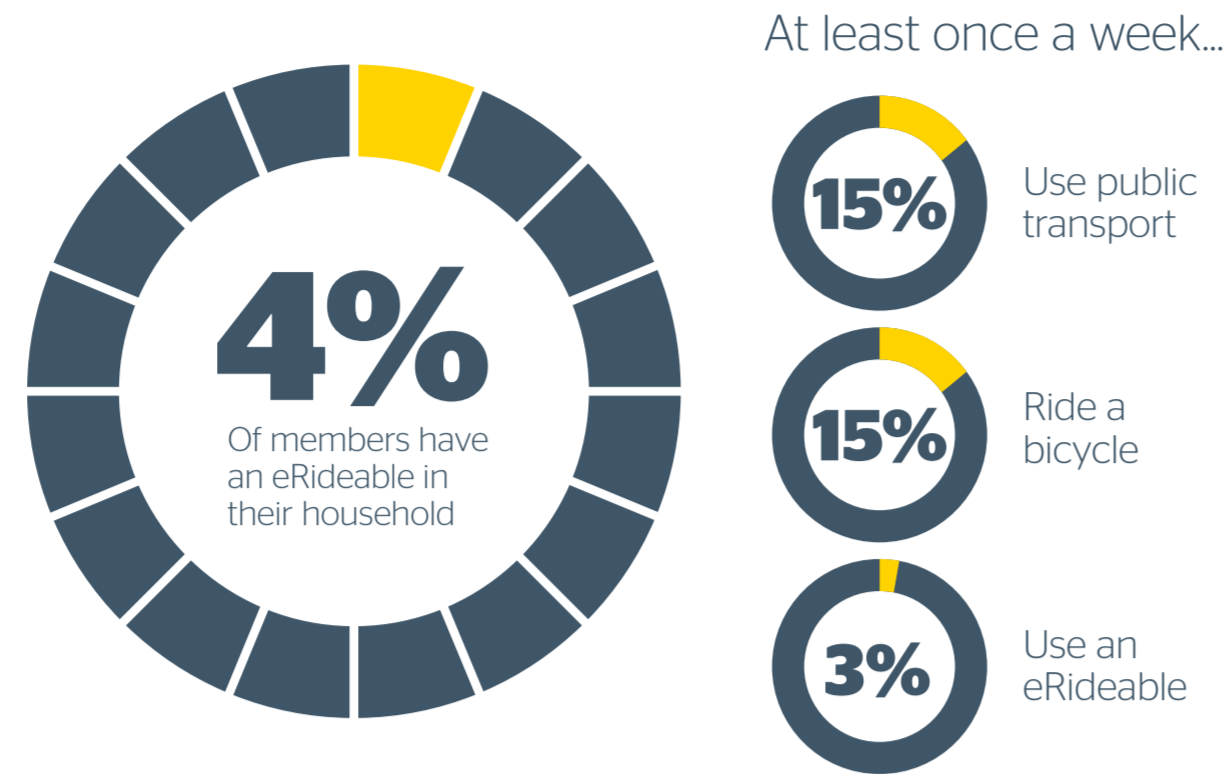
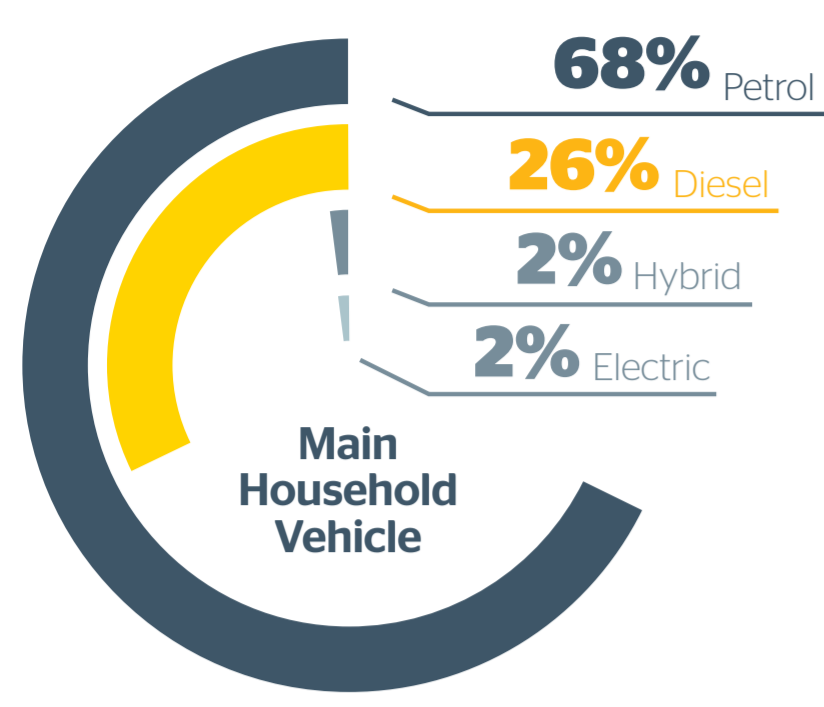


2023 Member Priorities Tracker

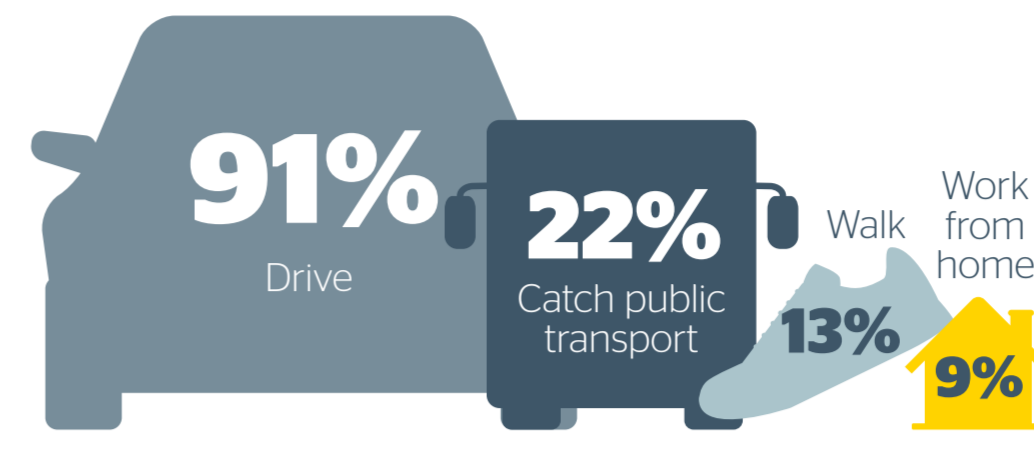
In 2020, RAC launched our vision for a safer, sustainable and connected future for Western Australians. Since then, we have run several surveys with our members each year to better understand how they travel and what matters most to them.

Vehicle ownership and transport usage

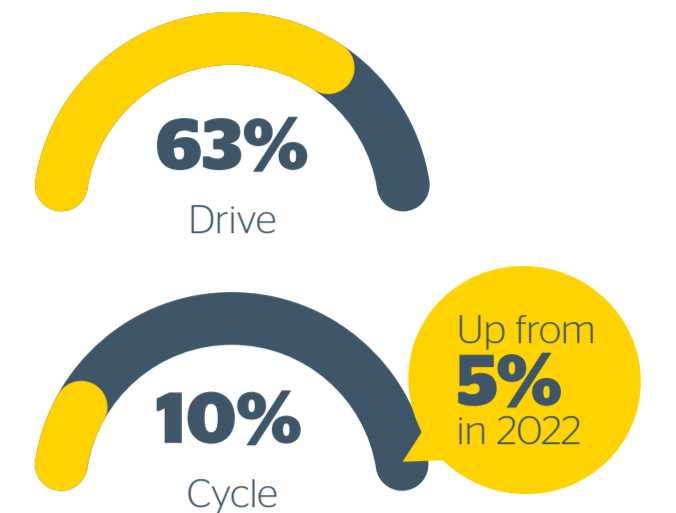


Transport priorities

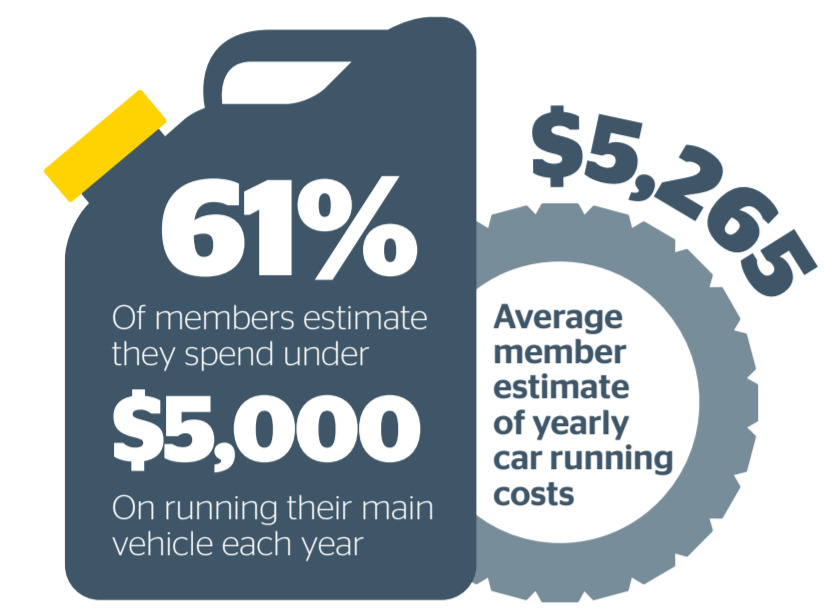
How members get to work or study¹



Preferred way to get to work or study

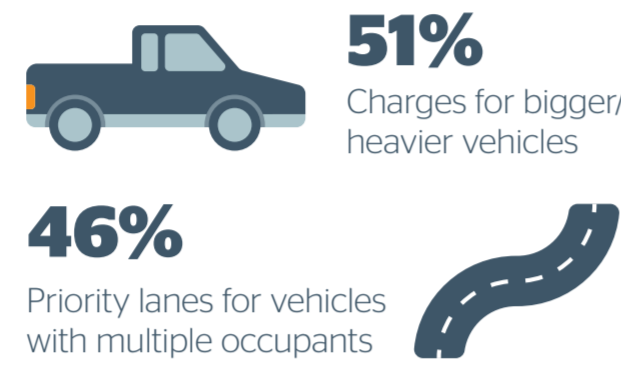


Cost of transport

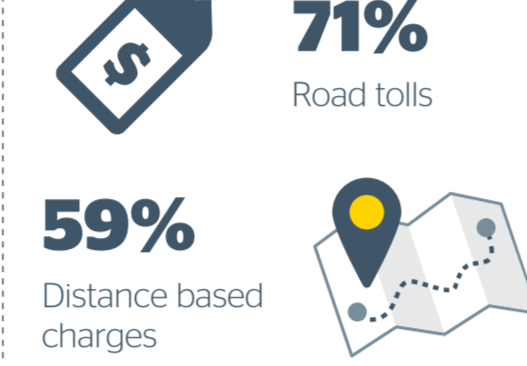


Of five road pricing strategies tested with members, the following was observed:

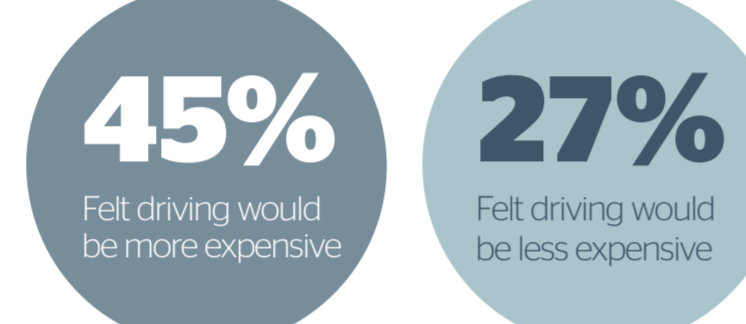
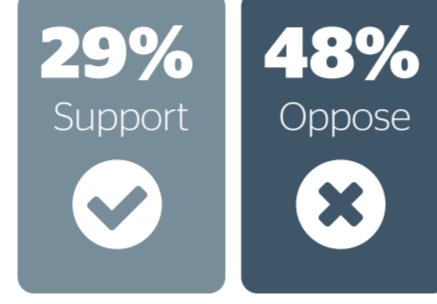
The greatest support was for:



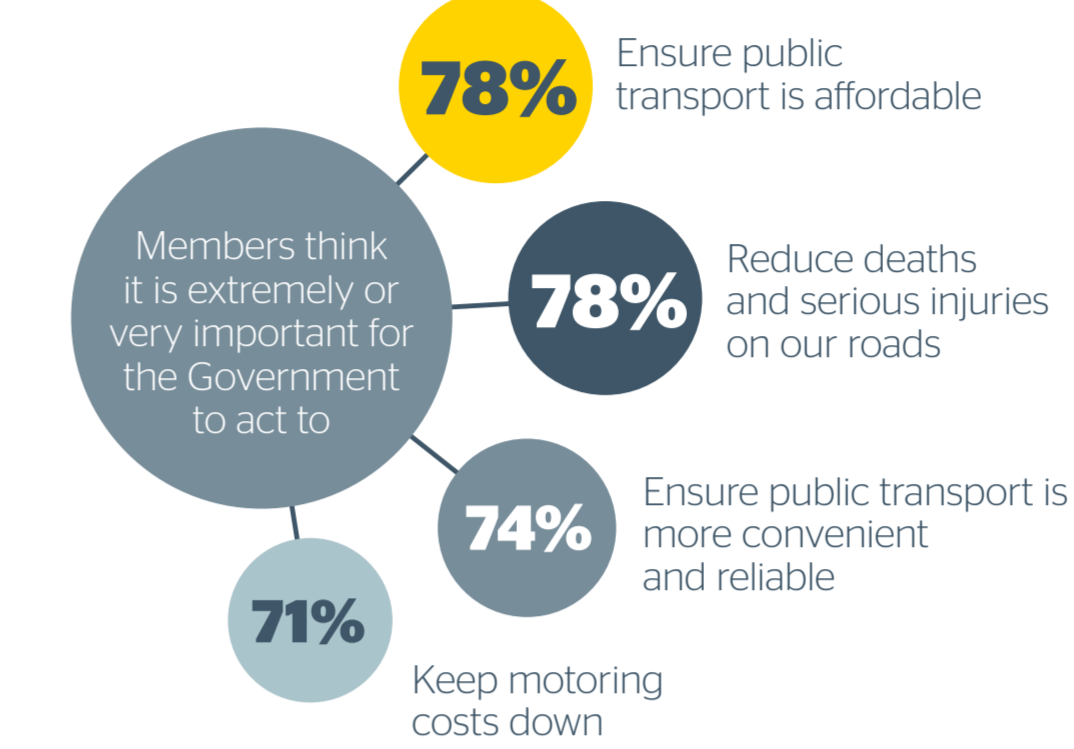
The greatest opposition was for:



Congestion charges had more opposition than support



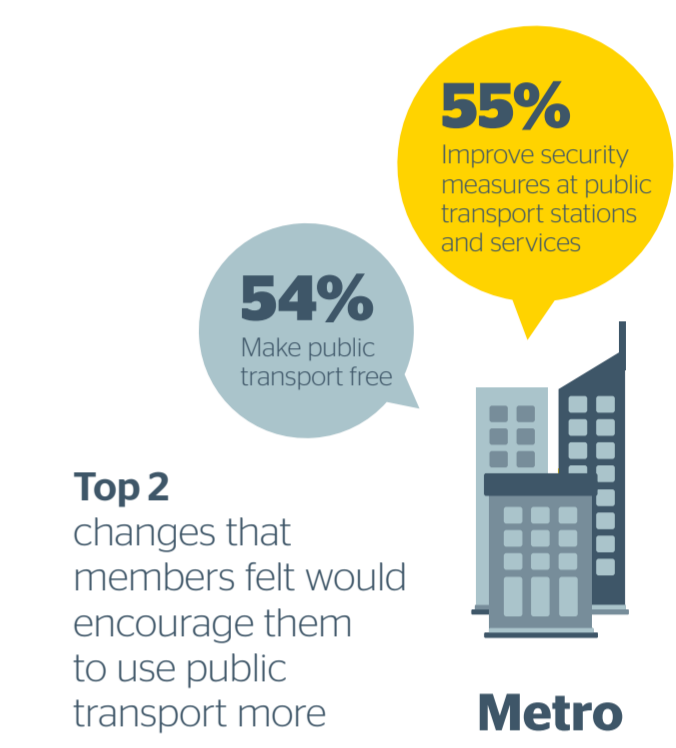
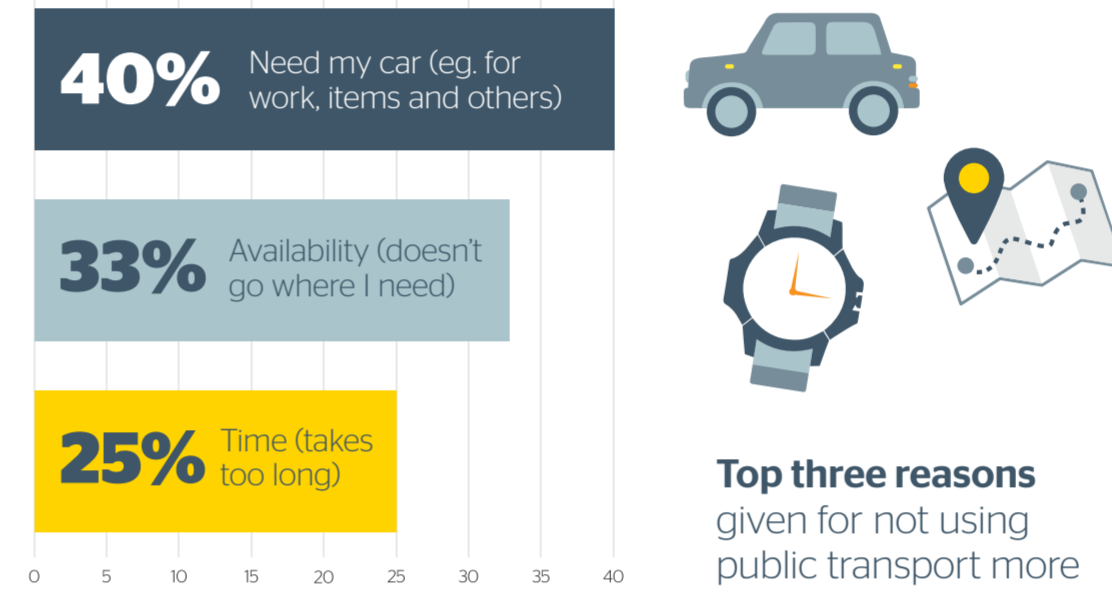
Comparing the cost of commuting to and from work in Perth as a driver vs public transport



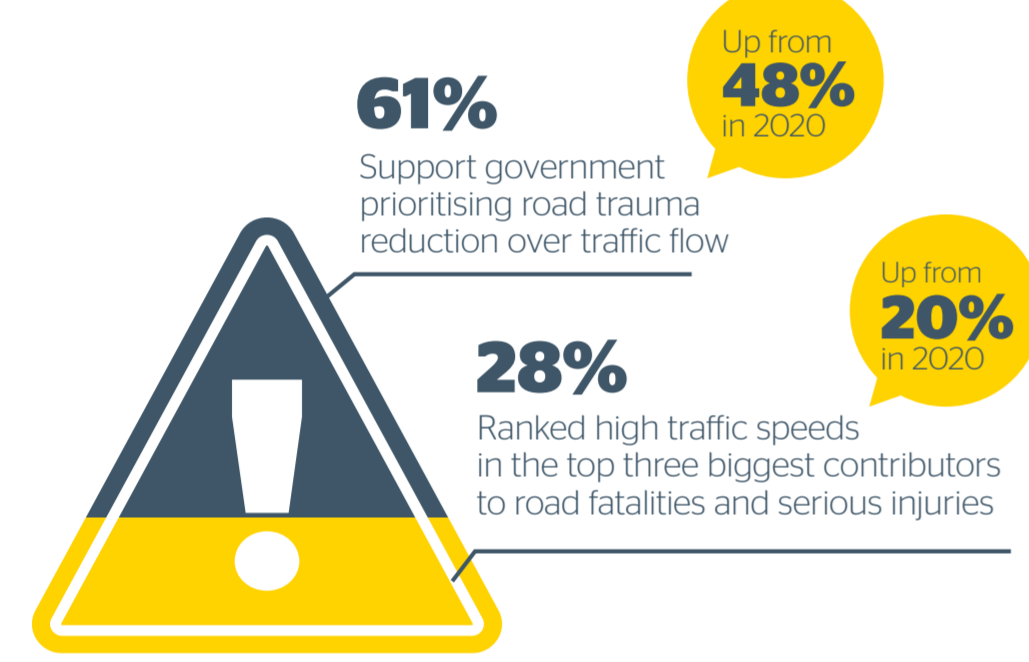
Top action to reduce motoring costs in the last year



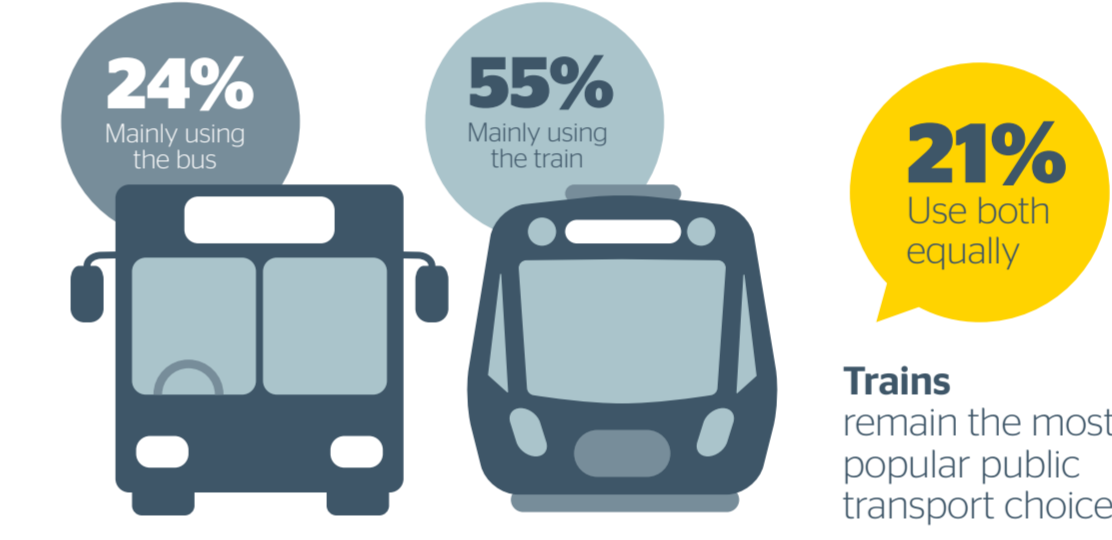
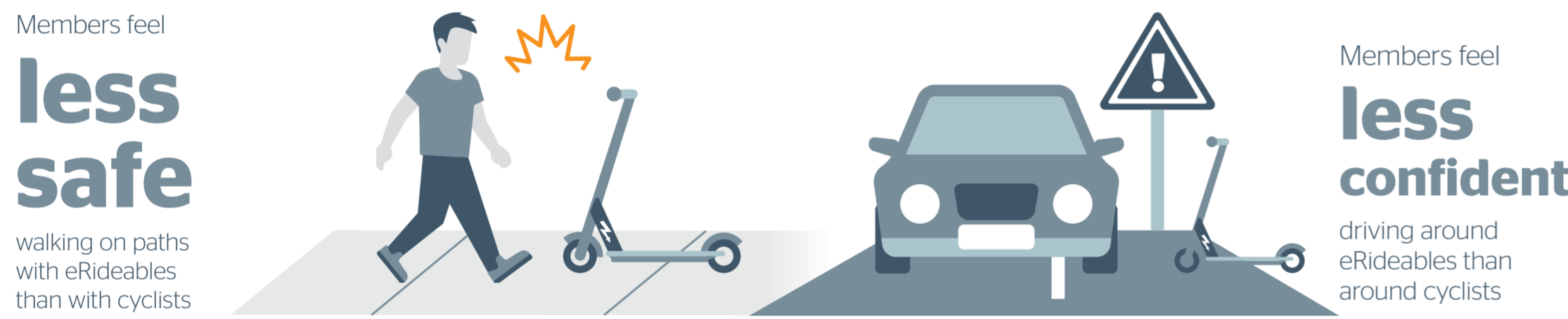
Public transport



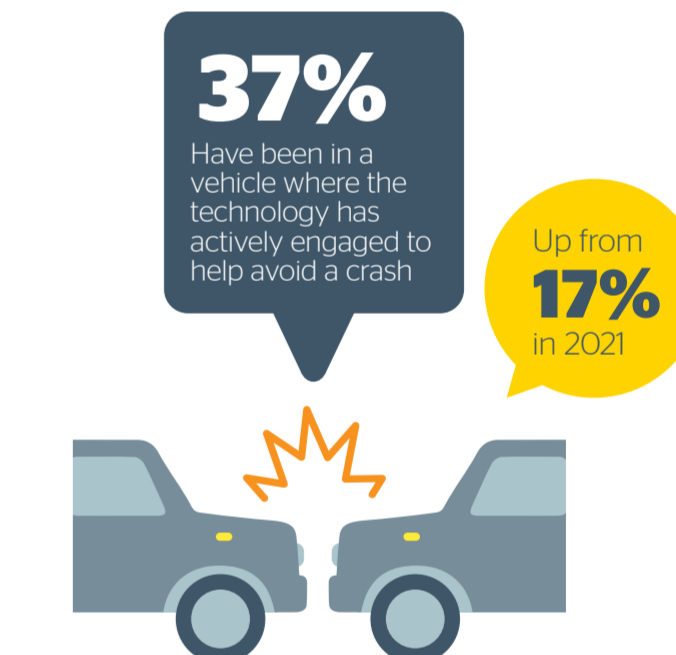
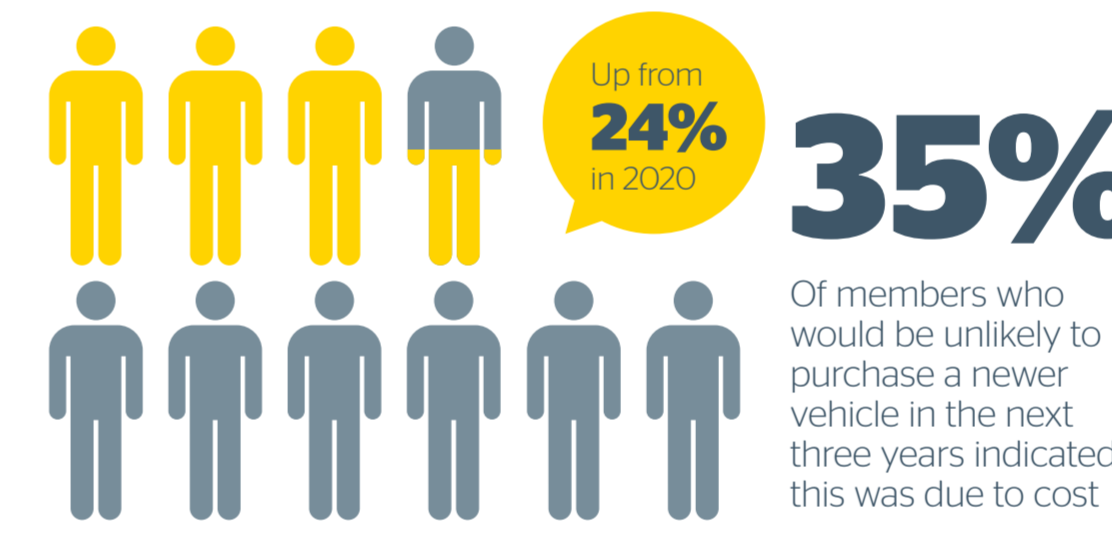
Road safety



Initiatives members believe would be most effective at reducing the number of fatalities and serious injuries on WA roads

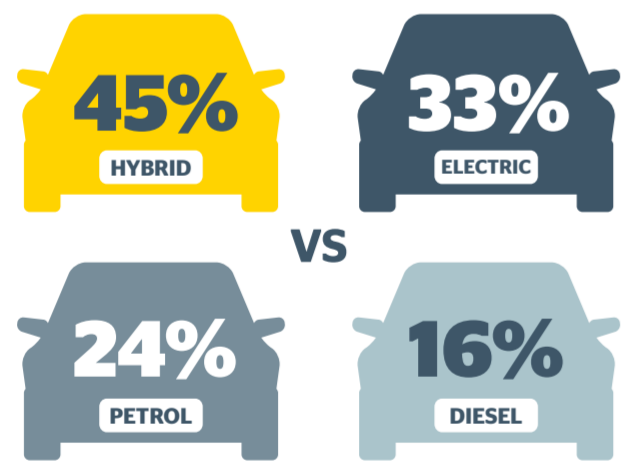


Vehicle safety

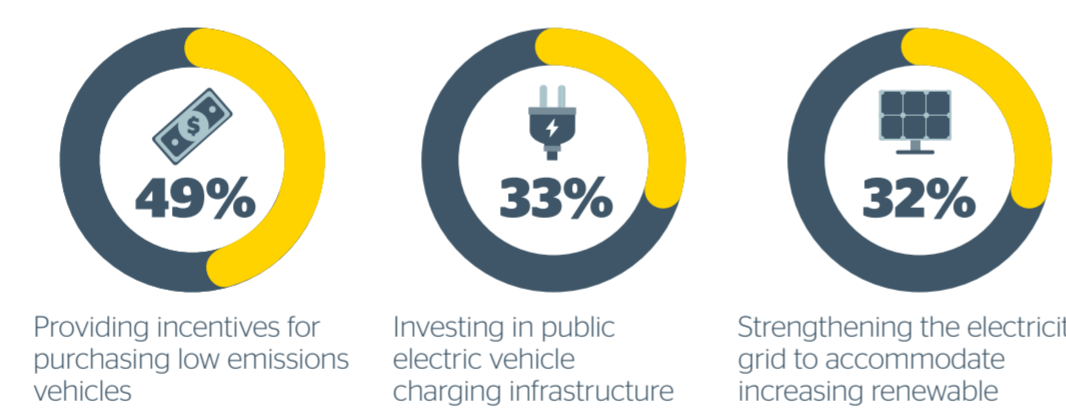


Sustainability

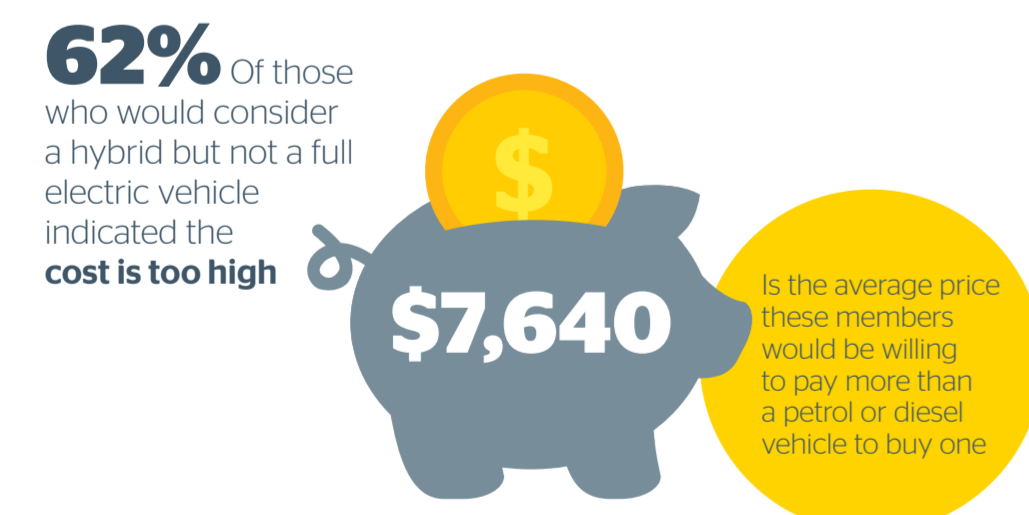
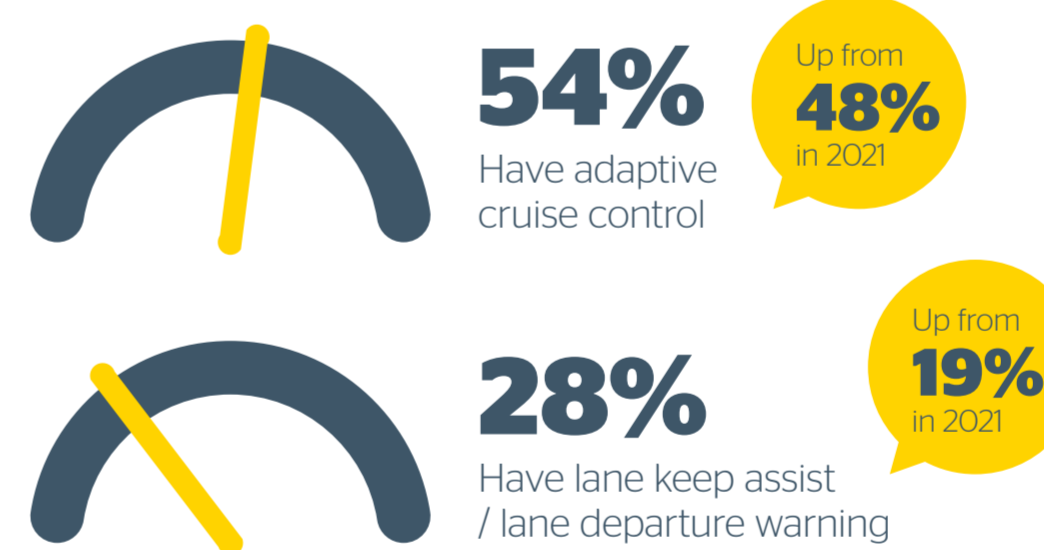
Percentage of members who would consider the vehicle type for their next vehicle purchase



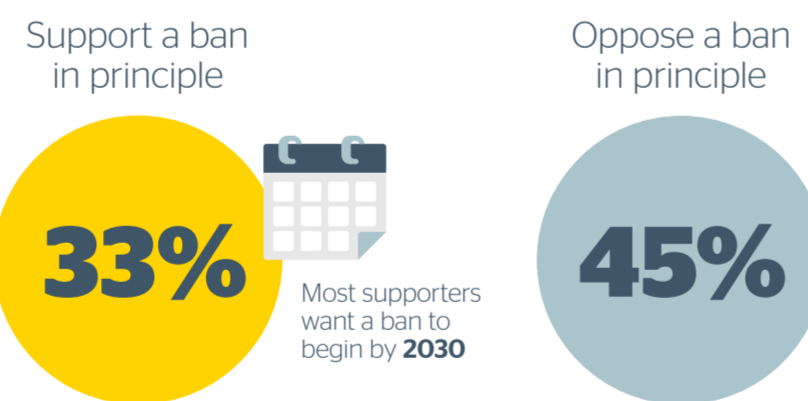
Top actions government should take to reduce vehicle emissions



Safety features becoming prevalent in members' vehicles

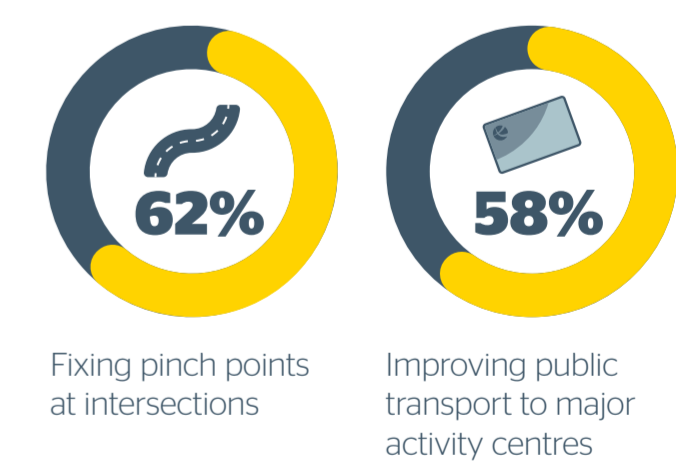
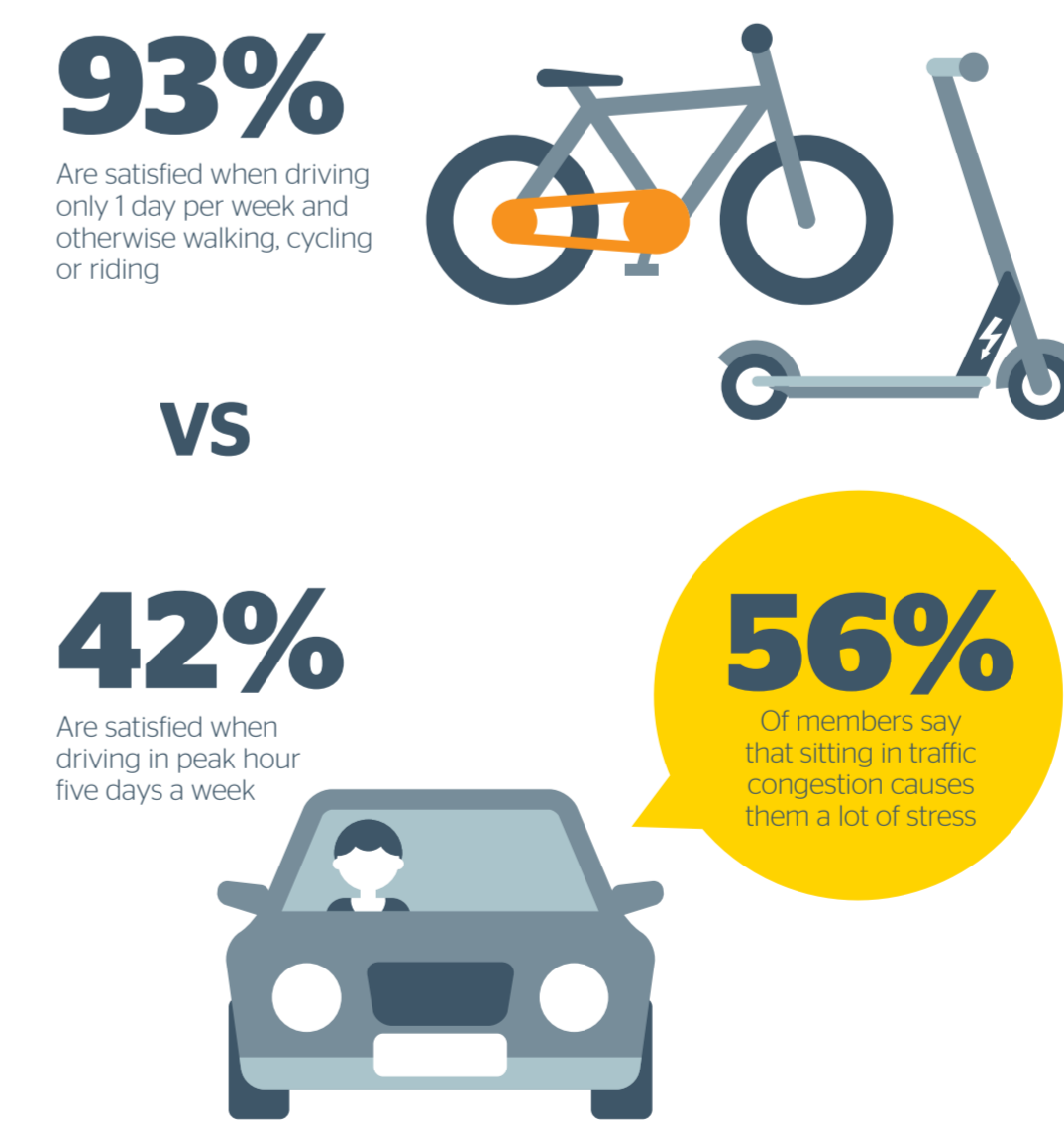


When it comes to a future government ban on the sale of new internal combustion engine vehicles...



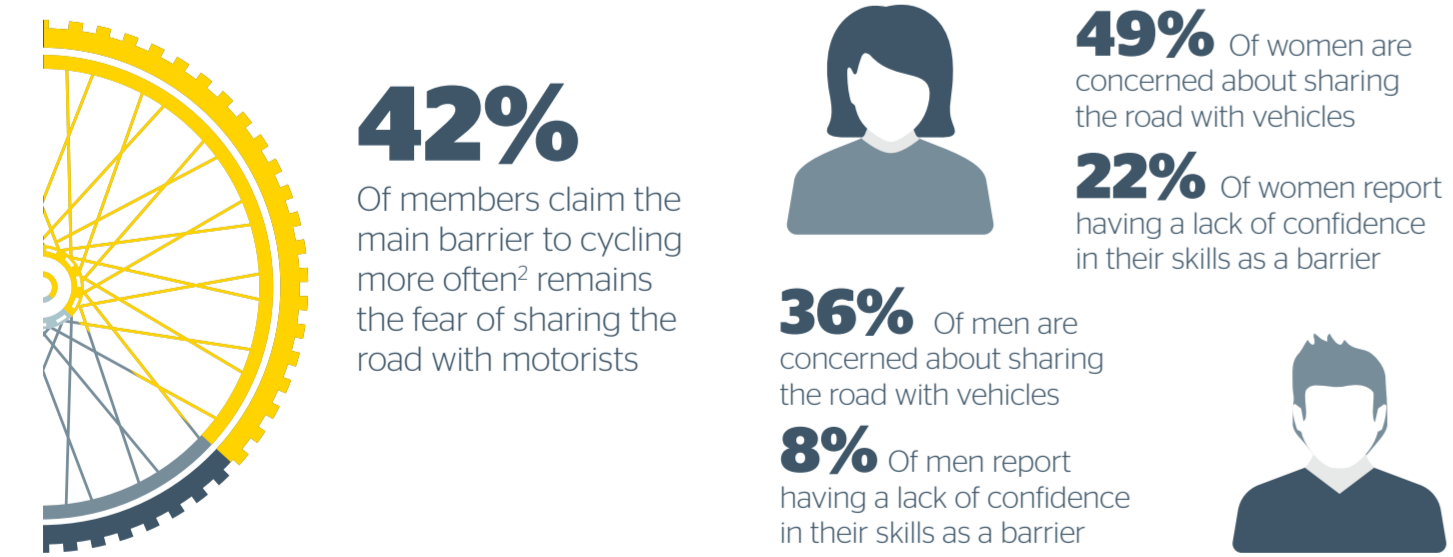
Commuting and congestion

Perth based members satisfaction with commute

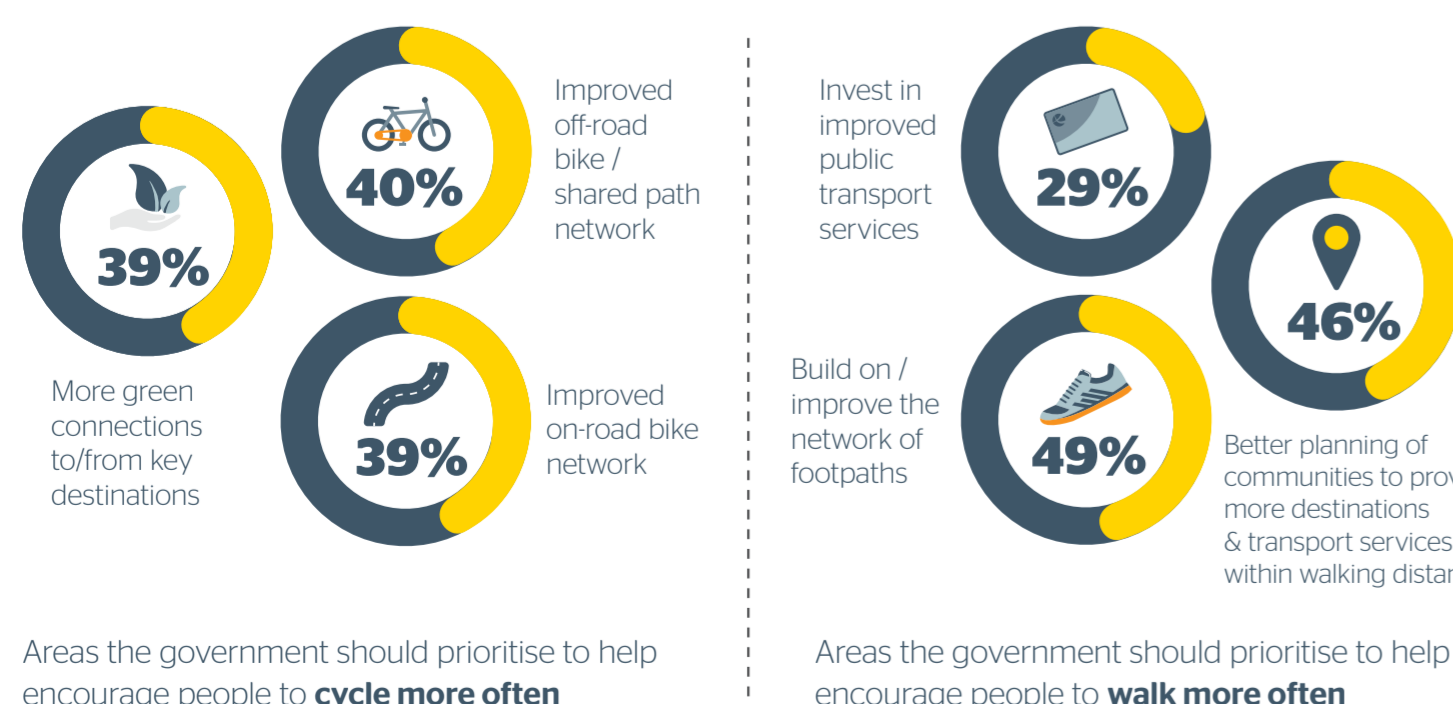
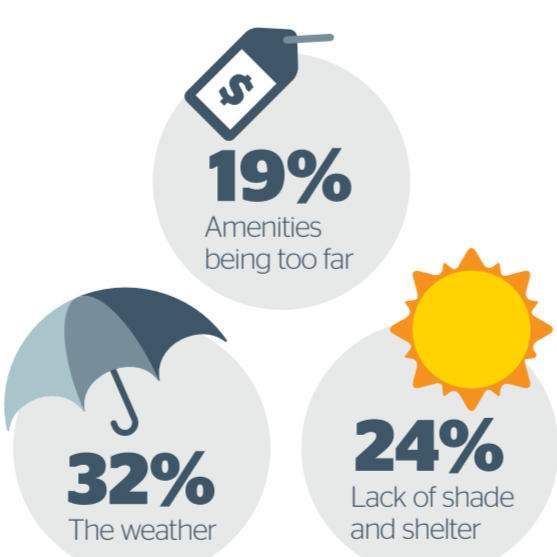


Active travel

Main barriers to cycling



Main barriers to walking



Areas the government should prioritise to help encourage people to cycle more often

Areas the government should prioritise to help encourage people to walk more often



¹Responses are multi choice and show that members change transport mode over the work week, but driving remains the most dominant
²Includes members who responded that they never ride a bicycle